

# NAPA NEWS

Fall 1999

Natural Area Preservation Association, Inc.  
4144 Cochran Chapel Road  
Dallas, TX 75209

(214) 352-8370

Katherine Goodbar, Editor

## THE NEWEST PRESERVE

Long Hollow Creek is its name and the conservation easement was given by Paul Fambro. It is located on the very scenic Lime Creek watershed near Cedar Park, Texas southwest of Georgetown in Travis County.

Except for about half an acre, the land is completely undeveloped. Paul Fambro has managed his land for 15 years as a "nature preserve", and the botanical diversity he has achieved is exceptional. One of the most impressive features of the property is the many grassland openings with native bluestems, Indian grass, grammas and lovegrass. They are tall, green and exceedingly healthy.

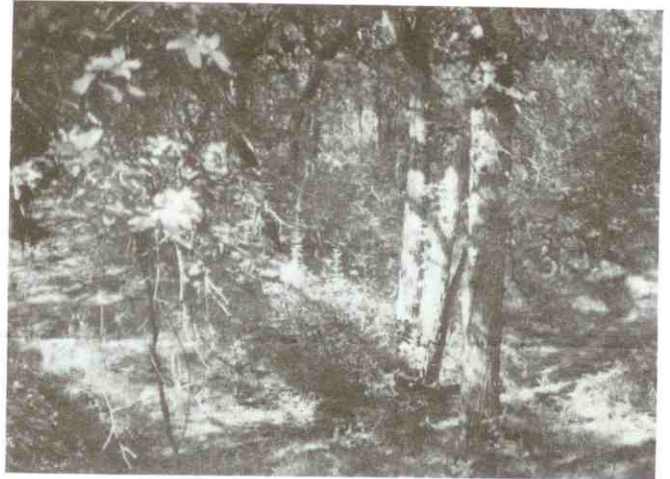
The preserve contains an ideal mix of Hill Country trees, including a number of black cherries, Spanish oak, Live oak, Texas Ash, Black walnut, Cedar elm, Texas persimmon and Gum bumelia. By extensive clearing of Ashe juniper, Paul has achieved an apparently stable woodland.

The semi-perennial spring-fed Long Hollow Creek flows through with vegetation such as salvia and large palmetto suggesting frequent flow and constant subsurface moisture.

In the same area of the watershed, very large tracts of land are protected by the Texas Audubon Society and the Lower Colorado River Authority as habitat for the Golden Cheeked warbler and the Black capped vereo. Several other landowners in the area have expressed an interest in protecting their land with conservation easements. We join Paul in

wishing that the unique beauty of the entire watershed could remain untouched forever.

Thank you, Paul Fambro! It is an honor and privilege to help you manage this fine property.



Long Hollow Creek

## CIBOLO CREEK PRESERVE

This lovely new preserve was deeded to NAPA by Mr. A.C. (Bub) Smith of Amarillo. It is located in Universal City about five miles from San Antonio.

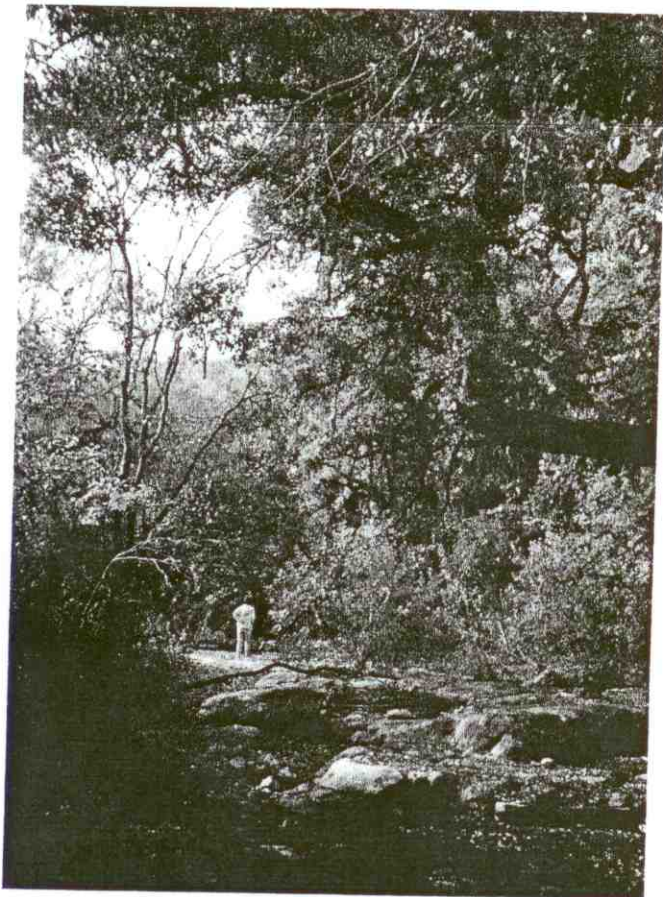
The large rounded rocks and slick, pitted surface of the creek bed are ample evidence that the now placid creek turns into a raging river during flood stage. The vegetation however, seems to have thrived on its periodic encounter with high water. The entire 30-acre area on both sides of the creek is resplendent with huge old Live oaks, Texas Ash, Spanish oak, Cedar elm and enormous Mexican buckeyes.

## Cibolo Creek Preserve – Cont.

The creekside bluff gradually increases in height to the north until it becomes a 30 foot high steep limestone cliff, spectacular with trees growing from every niche in the rock. Infeeders along the way have American elm, Gum bumelia, hawthorn, persimmon, Eve's necklace, soapberry and some large False (bastard) indigo.

There are many shrubs that will bloom in the spring and remnants of enough herbaceous plants now to let you know that it will be fascinating to see the area at the other times of the year.

We are deeply indebted to Mr. Smith for choosing NAPA to care for and protect this impressive site.



Sandy Penz explores a Cibolo Creek tributary

## RIVEROAKS VALLEY PRESERVE

A.C. Smith also donated this small, but precious preserve to NAPA. What a generous and farsighted gentleman he is! Many generations to come will be blessed by these protected land parcels.

Riveroaks Valley preserve is east of I-35 in Georgetown where the San Gabriel River has cut a deep, steep sided canyon through the Cretaceous limestone.

As you peek over the edge of the cliff, only the tops of the trees are visible. There are Cedar elm, native pecan, Ashe juniper, Texas red oak, Mulberry and little glimpses of bright red sumac. It is the unknowns in the space below them that are intriguing. Bob O'Kennon, our NAPA plant wizard, was quite excited over our description of this canyon. He says that these kinds of steep, inaccessible cliffs have not been disturbed, and there is a good chance of finding rare plants. We are all excited over the prospect of his discoveries.

An historic note – There is a Municipal park upstream on the opposite bank of the San Gabriel. A sign there says that this crossing was the site of the 1869 suspension bridge across the river to the Chataque campground.

Our heartfelt thanks go to Mr. Smith for donating this interesting site to NAPA.

\* \* \* \* \*

*If you want inner peace,  
find it in solitude, not speed,  
And, if you would find yourself,  
look to the land from which you came  
and to which you go.  
-Henry David Thoreau*

